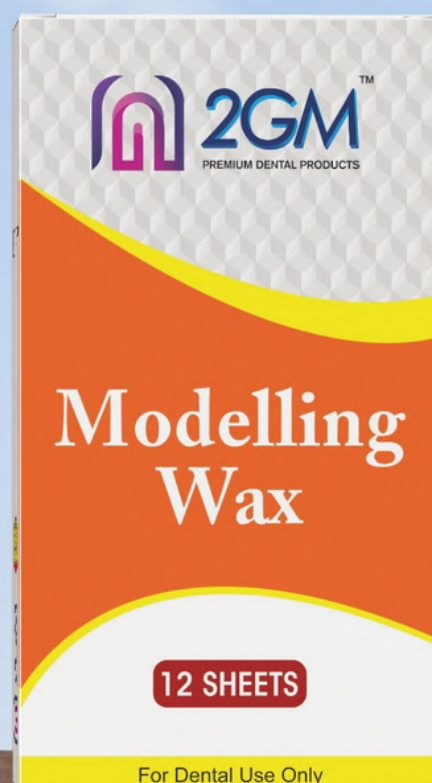


PRODUCT CATALOGUE



**GIRIRAJ
PRODUCTS**

"For Those Who Believe in Quality"



Introduction

Looking for Dental Material of Right Quality and Affordable Price? - We can Help you !!!!! - Giriraj Products (2GM)- India.

We at GIRIRAJ PRODUCTS have the repo of “RIGHT QUALITY AT RIGHT PRICE” in Indian as well as International market. Our An ISO 9001:2015 manufacturing standard helps us to deliver quality dentistry products at affordable rates to masses.

Our goal is to build confident relationship with our customers. Under the fruitful direction of our Mentor “Girish Mulik & Vipul Mulik (Partner)”, we have been able to gain trust of clients in the market. Established in the year 2017, at Mumbai, (Maharashtra, India), we are backed by robust and well structural infrastructural base.

We as Manufacturer of Products cater to manufacturers in their own brand / neutral packing (Private Label) and contract manufacturing as well as Customization of Size, Color and Packaging as per your requirements is possible in case of reasonable quantity.

Manufacturing and Exporting range of dental products, covering three major areas namely:-

1. Prosthodontic Range : Modelling wax, Bite Registration wax, Shellac Base plate , Green Sticks etc.
2. Institutional Range: Beading wax , Boxing wax ,Carving Blocks etc.
3. Clinical Range : Calcium Hydroxide , Zinc Oxide, Sodium Hypochlorite , Eugenol , GP Solvent etc.

As a special case for Personal use for Dental Clinic / Hospitals / Institute & Dentist we will be pleased to send / Delivered small quantity of our Products by International Courier / Air post Parcels to be delivered at your final destination (Door Stapes) within 4-6 working Days.

1

2GM DENTAL WAXES

- Modelling Wax.....5
- Plasti Wax.....6
- Shellac Base Plate.....7
- Spacer Wax.....7
- Impression Composition.....7
- Bite Registration Wax.....7
- Green Tracing Sticks.....8
- Sticky Sticks.....8
- Inlay Sticks.....8
- Carding Wax.....9
- Carving Wax.....9
- Sprue Wax.....9
- Boxing Wax.....10
- Beading Wax.....10
- Ortho Wax.....10

2

2GM PATTERN WAXES

- Blue Inlay Wax.....12
- Undercut Wax - Red.....12
- Margin Wax - Orange.....12
- Body Wax - Green.....12
- Cervical Wax - Red.....13
- Copping Wax -Red.....13
- Occlusion Wax - Sky Blue.....13
- Pattern Wax - Violet.....13
- Sticky Wax.....14
- Mockup Wax.....14

3

2GM DENTAL STONE

- Dental Stone Yellow - Type III.....16
- Dental Stone Green - Type III.....16
- Ultra Stone Blue - Type III.....17
- Die Stone Orange - Type IV.....18
- Die Stone Grey - Type IV.....19
- Die Stone Purple - Type IV.....19
- Die Stone Off-White - Type IV.....19
- Dental Plaster P.O.P. - Type II.....20
- Alginate - Non-Chromatic.....21
- Alginate - Chromatic.....22

4

2GM RAPID CURE SOLUTIONS

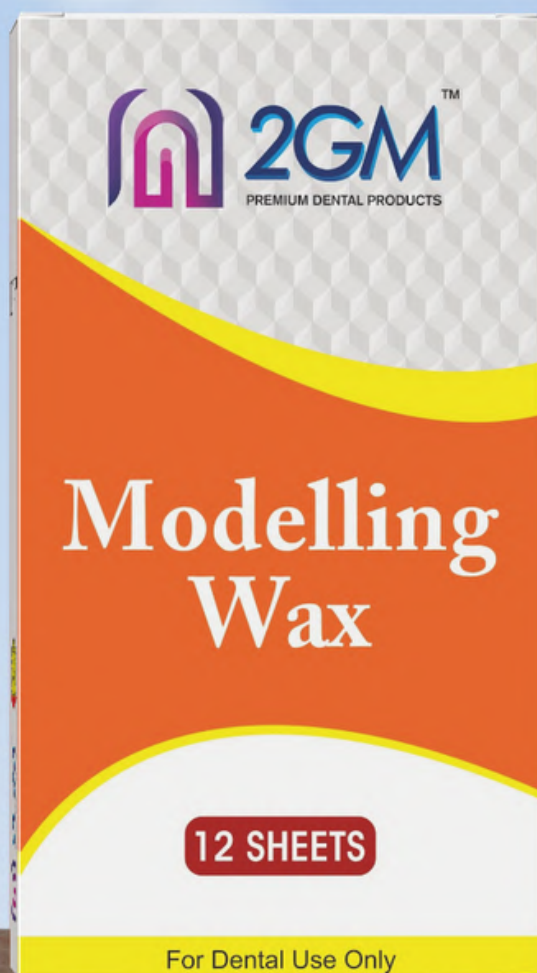
- Cold Cure Liquid.....24
- Cold Cure Powder.....24
- Heat Cure Liquid.....25
- Heat Cure Powder.....25
- Cold mould Seal.....26

4

OTHER DENTAL PRODUCTS

- Die Hardner.....28
- Die Thinner.....28
- Die Spacer.....28
- Die Hadner Thinner Spacer Set.29
- GP Plus (Gutta Percha Solvent).30
- Calcium Hydroxide Powder.....30
- Pumice Powder.....30
- Zinc Oxide.....30
- Sodium Hypochloride 3% & 5%.31
- Eugenol.....31
- Teethsets.....31
- Polishing Discs.....31

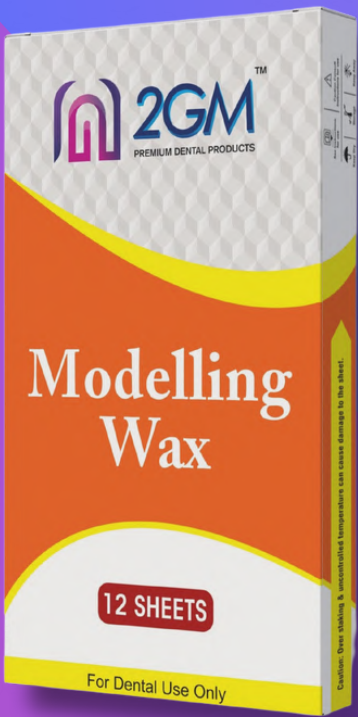
Dental Waxes



Modelling Wax

Uses:

- Diagnostic Wax-Up
- Framework Design
- Bite Registration
- Custom Tray Formation
- Wax patterns for Casting
- Occlusal Adjustments
- Laboratory Training and Education



200 gms Packet

- 12 Sheets in Packet
- Sheet Dimension of 16cm x 9cm
- Thickness is of 1.3-1.5mm

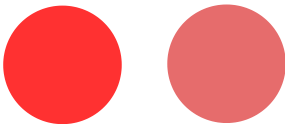
225 gms Packet

- 12 Sheets in Packet
- Sheet Dimension of 16cm x 9cm
- Thickness is of 1.5-1.7mm

500 gms Packet

- 27 Sheets in Packet
- Sheet Dimension of 16cm x 9cm
- Thickness is of 1.5-1.7mm

Available in Red & Pink Colour



Plasti Wax

- Extra hard High quality translucent pink Wax
- 1 packet contains 12 sheets of dimension 160 x 90 mm
- Thickness of 1 sheet is 1.5-1.7mm



Features

- Formable at increased temperature than regular modeling waxes
- Highly sculptable
- Hard enough at oral temperatures to prevent change in occlusion during try-in
- Good dimensional stability
- Easy and clean carve teeth

2GM Shellac Base Plate

- 8 Upper & 4 Lower
- Made from Superior Quality Shellac
- Optimum thickness for high mechanical strength.
- Easy to manipulate and retain stable shape after heating.



2GM Spacer Wax

- Pack of 25 Sheets Upper or lower spacer wax (0.3 mm (± 0.05 mm))
- It Prevents direct contact of acrylic trays with soft tissues
- It increases the thickness of wax rims while making dentures using base plates.



2GM Impression Composition

- Each packet of 200gms contains 5 Cakes
- Used for taking primary impression in edentulous gums and become stable after cooling and are shrinkage free.



2GM Bite Registration Wax

- Dimensionally stable & does not shrink or distort
- when heated at 55°C it turns in to 'Dead Soft' in less than 1 min
- Available in 250gms & 500gms



2GM Green Tracing Sticks - 10 Sticks

- Low fusing material primarily used for border extensions on impression trays
- High viscosity also makes it ideal when recording the full depth of the sulcus.



2GM Sticky Sticks - 10 Sticks

- It is firm , free from tackiness & brittle at room temperature.
- It is sticky when melts & adheres to the surface on which it is applied.



2GM Inlay Sticks - 10 Sticks

- It is used for Modelling of crowns & bridges
- Excellent scrapping properties with short setting time
- Burns out leaving no residue / smooth castings



2GM Carding Wax

- It is the material on which porcelain or acrylic teeth are easily fixed
- Pouring wax suitable for automatic machines for tray filling.
- Wax firmly holds the teeth and while teeth is pulled negligible amount of wax comes along with it.



2GM Carving Wax

- 40 Wax Blocks
- Available in White, Yellow, Red & Blue Colour
- Tough, Hard & Bubble free. Does not chip or flakes.



2GM Sprue Wax - Blue

- Available in diameter of 1.5mm , 2mm , 2.5mm , 3mm , 5mm
- Stiff enough to hold the wax pattern & does not deform in shape
- Available in Yellow & Blue Colour



2GM Boxing Wax

- It is soft and tacky for boxing in impressions
- Use to form a plaster or stone cast from an impression of the edentulous arch
- Adheres easily to most of the surfaces
- Available in 6" & 12" length



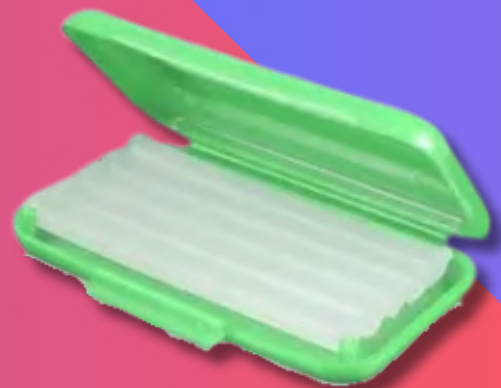
2GM Beading Wax

- It creates the base of the cast and preserves the outer portion of the cast
- It is sticky enough to easily adapt at the periphery or edge of alginate impression by hand pressure.



2GM Ortho Wax

- Patient relief wax sticks help soothe and prevent irritation to the gums caused by Braces and other dental appliances
- Ortho Wax Is Made Of High Quality Medical Grade Paraffin Wax
- This dental wax is clear, odorless and tasteless so you forget it is in your mouth so it does not interrupt your life.



Pattern Waxes



2GM™
PREMIUM DENTAL PRODUCTS

PATTERN WAX
REGULAR WAX - VIOLET

For Dental Use Only

Manufactured and Marketed in INDIA by:
GIRIRAJ PRODUCTS
MANUFACTURERS & SUPPLIERS OF DENTAL PRODUCTS

Registered office : 3/602, Amrut Park , Khadakpada, Kalyan (W)421301
Factory : 1, Siddhivinayak , Mhatre Nagar, MIDC, Dombivli (E)421201
For more details contact +91 9987 008662 | +91 9819 614229. girirajproducts17@gmail.com, www.girirajproducts.com

NET WT 200gms



2GM Blue Inlay Wax

- Low Thermal Contraction
- Easy to carve without chipping
- Excellent scrapping properties with short setting time
- Available in 200/250gms



2GM Undercut Wax - Red

- Non rebounding quality , Softer & more elastic
- Ideal for slightly undercut areas or for carving cavities for inlays
- Available in 200/250gms



2GM Margin Wax - Orange

- Margin Wax is to fill the cervical margin of the wax pattern
- This will prevent the flaring of the margin
- Available in 200/250gms



2GM Body Wax - Green

- Used for first inner Coping with Dip Wax then overcoat on it
- Available in 200/250gms



2GM Cervical Wax - Red

- Tension free, smooth-flowing wax for precise margins
- adapts perfectly to the margin line
- Available in 200/250gms



2GM Copping Wax - Red

- 2GM Copping Wax is in Red colour
- Available in 200/250gms



2GM Occlusion Wax - Sky Blue

- Ideal for efficient and aesthetic modelling of occlusal surfaces
- Wax drops form a ball when solidified, enabling even the most delicate occlusal contours to be waxed



2GM Pattern Wax - Violet

- Modelling of crowns & bridges
- Excellent scrapping properties with short setting time
- zero shrinkage
- Available in 200/250gms



2GM Sticky Wax

- It is sticky when melts & adheres to the surface on which it is applied
- It is firm , free from tackiness & brittle at room temperature.
- Used to connect or repair wax patterns
- It holds the components prior to fixation and gives a clean burnout
- Available in 200/250gms

2GM Mockup Wax

- Mock-up/Wax up is a production of wax models in the laboratory based on the impression of the existing situation in your mouth. It allows the alignment of patients wishes and real possibilities for developing a prosthetic replacement
- The mock-up also allows occlusal aspects of restorations, such as anterior guidance, to be evaluated.
- Available in 200/250gms as well as in sheet form.



Dental Stone



Dental Stone Yellow/Green

Uses:

- For fabricating custom tray, For denture repairs
- For study casts
- For lab procedures such as articulator cast mounting
- For processing full or partial acrylic dentures



- | | |
|------------------------|-----------------------|
| • Type | Class III |
| • Water/Powder Ratio | 28ml / 100gms |
| • Soaking Time | 15 seconds |
| • Mixing Time (Manual) | 30 – 40 seconds |
| • Working Time | 5 minutes |
| • Setting Time | 8-10 minutes |
| • Expansion | 0.25 % max |
| • Compressive Strength | |
| ▪ 1 hour | 250kg/cm ² |
| ▪ 24 hours | 600kg/cm ² |



- Available in 1Kg, 3Kg & 25Kg Pack

Dental Stone - Blue

Uses:

- For crown and bridge, dies and cast partials. For basing dental arches and opposing models
- For making study models
- In used where economical yet tough, non brittle and durable models are required



- | | |
|------------------------|-----------------|
| • Type | Class III |
| • Water/Powder Ratio | 28ml / 100gms |
| • Soaking Time | 15 seconds |
| • Mixing Time (Manual) | 30 – 40 seconds |
| • Working Time | 5 minutes |
| • Setting Time | 8-10 minutes |
| • Expansion | 0.25 % max |
| • Compressive Strength | |
| ▪ 1 hour | 250kg/cm2 |
| ▪ 24 hours | 600kg/cm2 |



- Avaialble in 1Kg, 3Kg & 25Kg Pack

Dental Die Stone - Orange

Uses:

- For crown and bridge, dies and cast partials
- For basing dental arches and opposing models
- For making study models
- In use where economical yet tough, non brittle and durable models are required



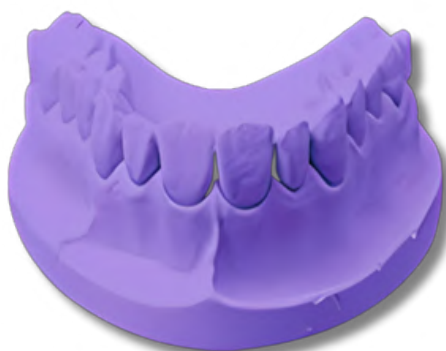
- | | |
|------------------------|-----------------|
| • Type | Class IV |
| • Water/Powder Ratio | 22ml / 100gms |
| • Soaking Time | 30 seconds |
| • Mixing Time (Manual) | 30 – 40 seconds |
| • Working Time | 5 minutes |
| • Setting Time | 8-10 minutes |
| • Expansion | 0.1 % max |
| • Compressive Strength | |
| ▪ 1 hour | 400kg/cm2 |
| ▪ 24 hours | 900kg/cm2 |



- Available in 1Kg, 3Kg & 25Kg Pack



Dental Die Stone - Grey
Type IV



Dental Die Stone - Purple
Type IV



Dental Die Stone - Off White
Type IV

Dental Plaster

P.O.P.

Uses:

- For fabricating custom tray, For denture repairs
- For study casts
- For lab procedures such as articulator cast mounting
- For processing full or partial acrylic dentures



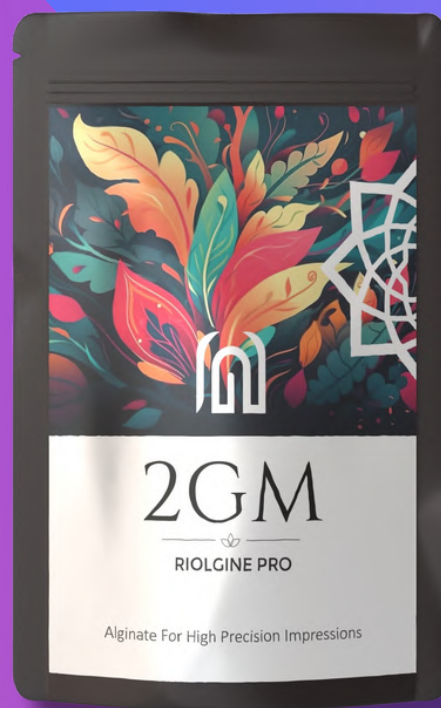
- | | |
|------------------------|------------------------|
| • Type | Class II |
| • Water/Powder Ratio | 60ml / 100gms |
| • Mixing Time (Manual) | 15 seconds (Wet) |
| • Working Time | 3 minutes Dry |
| • Setting Time | 5-7 minutes |
| • Hard Set | 30 minutes |
| • Expansion | 0.1 % max |
| • Compressive Strength | |
| ▪ Wet | 250 kg/cm ² |
| ▪ Dry | 300kg/cm ² |



- Available in 1Kg, 3Kg & 25Kg Pack

2GM Rioline Pro - Non-Chromatic Alginate

- Fast Setting
- DustFree
- Extra Elastic
- Creamy Consistency
- Thixotropy



Papermint Flavour

High precision alginate with advanced formulation to achieve the maximum level of detail reproduction.

- | | |
|------------------------|--------------|
| • Water/Powder Ratio | 200ml/100gms |
| • Mixing Time | 45 Seconds |
| • Total Working Time | 1 min 35 sec |
| • Initial Setting Time | 2 min 5 secs |
| • Setting Time | 2 min 35 sec |



***Available in 453gms packet & 1 Kg.packet**

2GM Rioline Pro - Chromatic Alginate

- Fast Setting
- DustFree
- Extra Elastic
- Creamy Consistency
- Thixotropy



Zingy Orange Flavour

High precision alginate with advanced formulation to achieve the maximum level of detail reproduction.

- | | |
|------------------------|--------------|
| • Water/Powder Ratio | 200ml/100gms |
| • Mixing Time | 45 Seconds |
| • Total Working Time | 1 min 35 sec |
| • Initial Setting Time | 2 min 5 secs |
| • Setting Time | 2 min 35 sec |



Colour Changing Effect



***Available in 453gms packet & 1 Kg.packet**

Rapid Cure Solutions



Cold Cure Liquid



100ml



450ml



4 L

- Useful in Orthodontic work
- Used for Full/Partial Upper or Lower Denture

Cold Cure Powders



100 gms



450 gms



3 Kg

Colours Available : Pink, Clear & Light Veined



Heat Cure Liquid



100 ml



250 ml



4 L

- Heat cured Acrylic denture base material
- Cross linking ensures Superior Quality

Heat Cure Powders



100 gms



450 gms



3 Kg

Colours Available : Pink, Clear & Light Veined



Cold Mould Seal 500ml



Cold Mould Seal 5 L

- Cold Mould Seal is a specially developed formulation of separating solution for universal use, suitable for both packing / pressing technique & cast moulding.
- Prevents direct contact between the denture base resin & mold surface
- Makes tough film with elasticity which is unbreakable in pressure.



Other Dental Products



Die Hardner
100ml

- Rapid setting and thereby reduces working time
- It seals, hardens and water proofs stone and plaster
- It protects models against abrasion



Die Thinner
100ml

- To control thickness & restores spacer to original consistency
- Rapid setting and thereby reduces working time



Die Spacer
Golden
100ml



Die Spacer
Silver
100ml

- It produces a homogenous coating on the die for crown and bridge restoration to assure accurate seating of restorations



Die Hardner Thinner Spacer (Golden) Set

- Contains 1 Bottle of Die Hardner (100ml) 1 Bottle of Die Thinner (100ml), 1 Bottle of Die Spacer (Golden) (100ml)



Die Hardner Thinner Spacer (Silver) Set

- Contains 1 Bottle of Die Hardner (100ml) 1 Bottle of Die Thinner (100ml), 1 Bottle of Die Spacer (Silver) (100ml)

2GM GP Plus - Gutta Percha Solvent

- Based on natural lemon oil extract
- To remove all types of root canal filling materials including Zinc Oxide Eugenol cement
- For removing gutta percha at the time of root canal re - treatment



2GM Calcium Hydroxide Powder

- Ideal for temporary root canal filling
- Pulp capping / Pulp protection
- Provide bactericidal effect on carious dentine
- Available in 25gms bottle



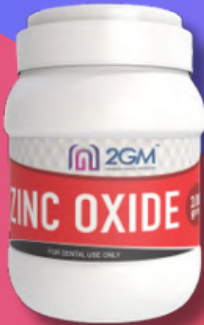
2GM Pumice Powder

- It is recommended as a cleaning and polishing aid to finish acrylic denture moulds.
- It is used in a slurry form to assist dental technicians obtain a smooth surface.



2GM Zinc Oxide

- 99.99% Pure.
- Temporary fixation of crowns & bridges
- Arsenic free, pure zinc oxide powder for temporary dental dressing
- Used for restorative and prosthodontic applications



2GM Sodium Hypochlorite 3% & 5%

- Used as Endodontic irrigant , Debridement and disinfection of root canals during and after instrumentation
- With PH buffer
- Orange Flavoured
- Available in 3% & 5 % strength



2GM Eugenol

- 99 % pure extract of oil of cloves
- For temporary relief of localized dental pain .
- Mixed with zinc oxide powder & used as temporary cement
- Cavity liner under most restorative materials



Teethsets

- Teethsets with all types of shades and sizes available.
- MOQ is of 4 Sets



2GM Polishing Silicon Discs

Available in 3 Sizes:

- 38 x 1.0 x 0.6mm
- 38 x 1.0 x 1.0mm
- 38 x 1.0 x 1.6mm

