

22-23 SPIDENT PRODUCT CATALOG



www.spident.co.kr

You're the Artist

Hands of an artist create something unimaginable.
When they work for people's sake, it could be more valuable.
You are the artist, not only dentist when you take care of people.
SPIDENT will be your partner at the moment with passion.

Introduction

SPIDENT CO., LTD. was founded in 1997 and we established R&D center in November 2004. Our manufacturing lines are certified by CE (MDD), FDA and ISO. SPIDENT CO., LTD. independently operates all the processes of R&D, quality control, product design & marketing, and finest customer services, aiming at your 100% satisfaction. Our strength lies in ideal quality with ideal price. This allows us to export over 100 countries at the moment.

History of SPIDENT

- **1997 Establishment**
 - Spident Co., Ltd. establishment
- **2006** · Established R&D Center
- **2010 The growth process**
 - Certified CE, ISO 13485, FDA
 - Launched chemical products to overseas market
 - Awarded in recognition of \$1M in exports
- **2014 Development**
 - Awarded in recognition of \$5m in exports
 - Launched NOP Needle
- **2015 Vacu-Mixer**
 - Launched Vacu-Mixer (World First Cordless Auto Impression Mixer)
- **2016 Glass Ionomer**
 - Research & Development of GIC (First manufacturer in Korea)
- **2017 20th Foundation Anniversary**
 - Selected as Global Strong Company
- **2018 Overseas Factory**
 - Established a factory in China
- **2019 Further Growth**
 - Awarded in recognition of \$10M in exports



CHEMICAL

RESTORATIVES

EsCom100
EsCom250
EsFlow / EsFlow LV
Core.it Dual
BaGIC II

Temporary

Temp.it / Temp.it Flow
Hexa-Temp

CEMENTS

EsCem
EsTemp Eugenol/NE
EsTemp Implant

ADHESIVE & ETCHANT

EsBond
FineEtch

ENDODONTICS

Guttapercha Points
Paper Points
VioPex
VioPaste
VioSeal
SoftPrep

PREVENTIVES

Seal.it

BASE & LINER

Base.it

COSMETIC DENTISTRY

FineDam
Block-out Resin



EsCom100

Light-cured restorative hybrid composite resin



EsCom100 is light-cured restorative hybrid composite resin for posterior and anterior restorations. It has 90 seconds of working time, which gives the dentist enough time to work on. EsCom100 has high compressive strength and excellent durability.












Characteristics

- High compressive strength
- Low polymerization shrinkage
- Easy to handle
- Excellent matching with natural tooth
- Extended working time (90 seconds)
- Available shades (11 shades):
A1, A2, A3, A3.5, A4, B1, B2, C2, A02, A03, TW

Indications

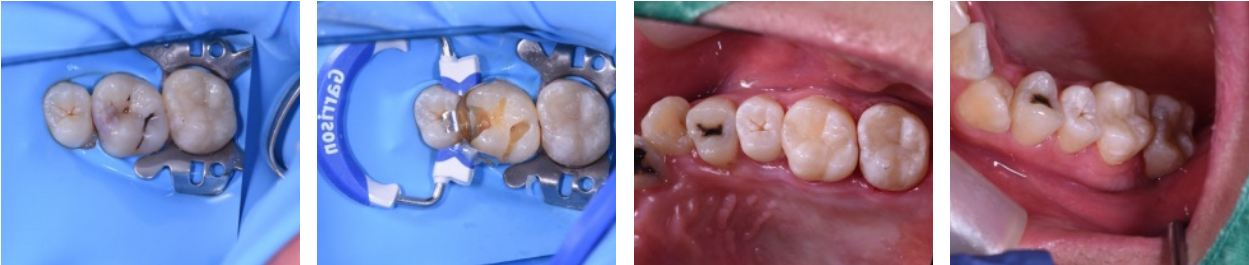
- Class I-V restorations
- Direct anterior and posterior restorations
- Direct veneers
- Blocking out of undercuts
- Repair of composite and ceramic veneers
- Core build up
- Splinting mobile teeth

Shade

Standard								
	A1	A2	A3	A3.5	A4	B1	B2	C2
Special								
	TW	A02	A03					

Clinical Cases

Cavity restoration on #26



Cavity restoration on #47



Syringe type: 1 x 4g syringe	Capsule type: 20 x 0.25g capsules	Capsule dispensing gun
#3111A1 A1	#3112A1 A1	#311500
#3111A2 A2	#3112A2 A2	
#3111A3 A3	#3112A3 A3	
#3111A35 A3.5	#3112A35 A3.5	
#3111A4 A4	#3112A4 A4	
#3112A02 A02	#3112A02 A02	EsCom100 system kit
#3111A03 A03	#3112A03 A03	#311400 5 x 4g syringe
#3111B1 B1	#3112B1 B1	(A1, A2, A3, A3.5, B2), 1 EsBond,
#3111B2 B2	#3112B2 B2	1 FineEtch, accessories
#3111C2 C2	#3112C2 C2	
#3111TW TW	#3112TW TW	EsCom100 syringe kit
		#311300 8 x 4g syringe
		(A1, A2-2, A3-2, A3.5, B2, A03)

*Spident R&D center internal data.

EsCom250

Light-cured restorative hybrid composite resin



EsCom250 is light-cured restorative hybrid composite resin for posterior and anterior restorations. It has 90 seconds of working time, which gives the dentist enough time to work on. EsCom250 has zirconia filler which makes wear resistance higher than our previous composite.














Characteristics

- Apply zirconia filler- enhanced flexural compressive strength
- Excellent ability to hold shape
- Low polymerization shrinkage
- Radiopaque
- Extended working time
- Available in 13 shades:
A1, A2, A3, A3.5, A4, B1, B2, C2, D2, A02, A03, G1, TW

Indications

- Class I-V restorations
- Direct anterior and posterior restorations
- Direct veneers
- Blocking out of undercuts
- Repair of composite and ceramic veneers
- Core build up
- Splinting mobile teeth

Shade

Standard								
	A1	A2	A3	A3.5	A4	B1	B2	C2
Special								
	TW	A02	A03	D2	G1			

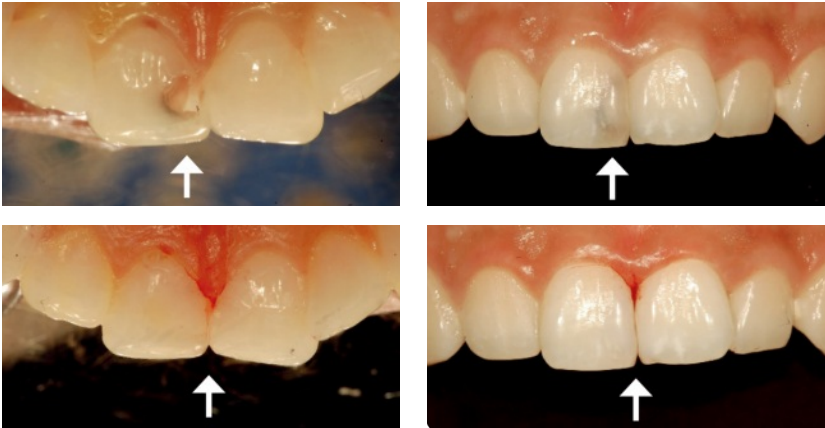
Clinical Cases

Case 1
Anterior teeth diastema #11 #12



※ Daseul jung (Jung, J. K. Dental Clinic)

Case 2
Anterior teeth diastema #11 (class III)



※ Daseul jung (Jung, J. K. Dental Clinic)

Case 3
Cavity restoration on #37



※ Prof. Duck Soo Kim (Kyunghee University Dental Hospital)

Syringe type: 1 x 4g syringe	Capsule type: 20 x 0.25g capsules	EsCom250 system kit
#3211A1 A1	#3211A1 A1	#321400 5 x 4g syringe
#3211A2 A2	#3211A2 A2	(A1, A2, A3, A3.5, B2),
#3211A3 A3	#3211A3 A3	1 EsBond, 1 FineEtch, accessories
#3211A35 A3.5	#3211A35 A3.5	
#3211A4 A4	#3211A4 A4	EsCom250 syringe kit
#3212A02 A02	#3212A02 A02	#321300 8 x 4g syringe
#3211A03 A03	#3211A03 A03	(A1, A2-2, A3-2, A3.5, B2, A03)
#3211B1 B1	#3211B1 B1	
#3211B2 B2	#3211B2 B2	
#3211C2 C2	#3211C2 C2	
#3211TW TW	#3211TW TW	
#3211D2 D2	#3211D2 D2	
#3211G1 G1	#3211G1 G1	

*Spident R&D center internal data.

EsFlow

Light-cured flowable composite resin



EsFlow is light-cured hybrid flowable composite resin. It uses various sizes of fillers and high molecular weighted Urethane Methacrylate monomer. Therefore EsFlow has superior compressive strength and lower polymerization shrinkage. It is appropriate for Class III – V and deep Class I.

Characteristics

- Highly esthetic
- Suitable compressive strength
- Low polymerization shrinkage
- Easy handling
- Radiopaque
- Strength equivalent to natural enamel after light-cured
- Available shades:
A1, A2, A3, A3.5, B1, B2, Blue, LVA1, LVA2, LVA3

Indications

- Class I–V restorations (restoration of difficult areas)
- Base liner
- Undercut fillings
- Repair of composite
- Pit & fissure sealant
- Usable in orthodontics

Shade



EsFlow LV

Light-cured flowable composite resin



SPIDENT CO., LTD. also provides Low Viscosity type for EsFlow. It is more flowable than standard EsFlow and easier to apply for hard-to-reach spots.

EsFlow 2 x 2g syringe, dispensing tips	EsFlow LV 2 x 2g syringe, dispensing tips
#3121A1 A1	#3121LA1 A1
#3121A2 A2	#3121LA2 A2
#3121A3 A3	#3121LA3 A3
#3121A35 A3.5	
#3121B1 B1	EsFlow Stand Kit
#3121B2 B2	#312200 10 x 2g syringe
#3121BL Blue	(A1, A2, A3, A3.5, B1, B2, LVA1, LVA2, LVA3, Blue)

*Spident R&D center internal data.

Core.it Dual

Flowable dual cured core build-up resin



Core.it Dual is dual-cured composite material for fabrication of core build ups and post cementations. It has excellent physical properties and can be easily applied onto the tooth.

Characteristics

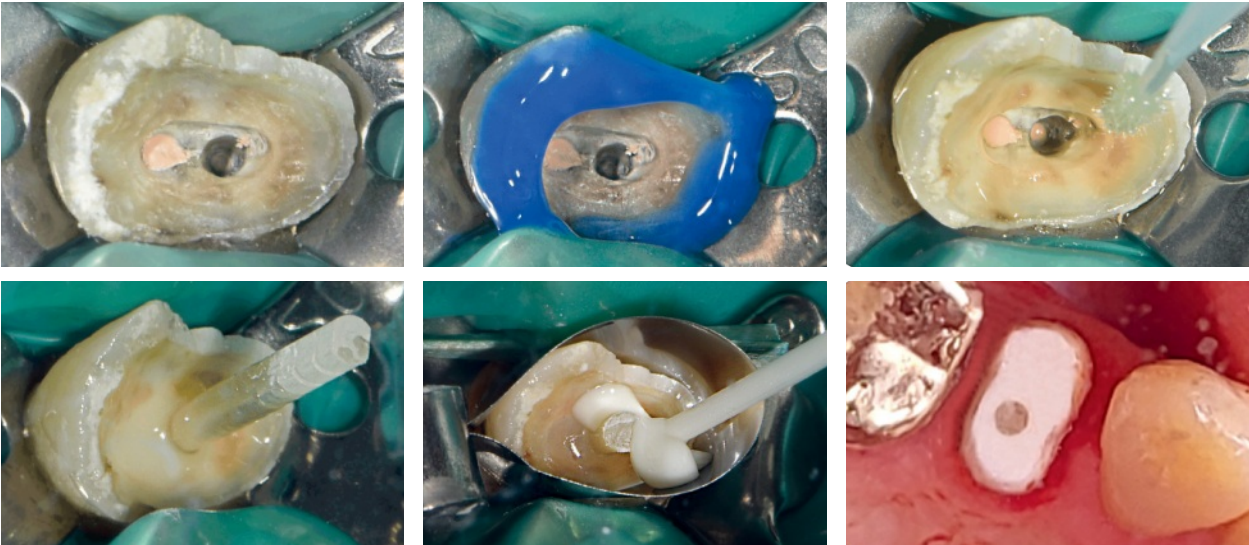
- Excellent flow & thixotropy
- Low polymerization shrinkage
- Compressive strength parallel to natural dentin
- Excellent radiopaque
- Convenient operation without slumping
- Cuts like dentin
- Available shade : Yellow (tooth), White, Blue

Indications

- All types of core build-up
- Cementation of root posts

Clinical Images

Molar Core build up



※ Prof. Yoo Seok Shin (Yonsei University Dental Hospital)

Syringe type: 2 x 10g syringe, mixing tips, eco tips, intraoral tips #2111YL Yellow #2111BL Blue #2111WH White	Syringe dispensing gun #212200 Cartridge type: 1 x 50g cartridge #2112YL Yellow #2112BL Blue	Core.it system kit #211300 2 x 10g syringe (yellow), eco tips, mixing tips, intraoral tips, 1 EsBond, 1 EsBond Activator, 1 FineEtch, accessories
-----------------------------------------------------------------------------------------------------------------------------------	------------------------------------------------------------------------------------------------------------------------	----------------------------------------------------------------------------------------------------------------------------------------------------------------------

*Spident R&D center internal data.

BaGIC II

Radiopaque glass ionomer filling material



BaGIC II is self-cured (chemical cured) glass ionomer filling material, which has radiopacity and fluoride release effect. BaGIC II has high strength, and shows sufficient wear resistance and durability. It has excellent chemical bonding force against the tooth, and is excellent in sealability at marginal sealing.

Characteristics

- Excellent biocompatibility
- Fluoride release (Anticariogenic effect)
- Excellent radiopacity
- Low acid erosion
- Low solubility
- Thermal expansion similar to natural teeth
- No shrinkage
- Great marginal adaptation
- Ideal handling and packability
- BPA and HEMA Free

Indications

- Restoration of primary teeth
- Core build-up
- Class III restoration
- Class V restoration
- Limited Class I restoration
- Geriatric restoration
- ART (Atraumatic Restorative Treatment) technique restoration
- Sandwich technique restoration

Clinical Cases



Class V restoration



Class V restoration

15g powder, 10g liquid

#11410021C A1 (21C) #11410022C A2 (22C) #11410023C A3 (23C) #11410026C B3 (26C)

*Spident R&D center internal data.

Temp.it

Light-cured temporary filling material



Temp.it is light-cured elastic material for temporary restorations. It has advantages of easy removal as one piece without any damage to preparation boundaries. We also have flowable type, Temp.it Flow, which has same characteristics but easier dispensing type, in syringe.

Characteristics

- Easy to place
- Easy removal in one piece
- Durable and tight marginal seal
- Low polymerization shrinkage
- Non-sticky
- Elastic
- Suitable for deep inlay preparation with parallel walls

Indications

- All types of temporary fillings, temporary protection in inlay and onlay technique
- Sealing for implant-screw access
- Block out material

Temp.it Flow

Light-cured flowable temporary filling material



Temp.it 3 x 3g syringe

- #1141YL Yellow
- #1141BL Blue

Temp.it Flow 4 x 1.2ml syringe

- #1142YL Yellow
- #1142BL Blue

Hexa-Temp

Self-cured temporary crown and bridge material



Hexa-Temp is bisacrylic self-cured resin, ideal for temporary crown and bridge with ease. It is practical thanks to the compatibility of its cartridge with the 1:1 dispenser and mixing tips of VPS impression materials. Hexa-Temp doesn't need trimming or relining. Hexa-Temp is ideal for long-term temporaries and longer bridge spans as it has exceptional compressive strength and flexural strength with good durability. It is suitable for long term with high fracture resistance. Hexa-Temp shows high gloss, even without polishing, and fluorescence similar to natural teeth.

Characteristics

- High compressive and flexural strength
- Highly aesthetic provisional materials
- Convenient work steps, easy to trim and polish
- High stability of shape and shade
- Lower shrinkage and polymerization temperature
- Applicable with mixing tip of impression materials
- Available in 4 shades: A1, A2, A3, TW

Indications

- Fabrication of temporary crown, bridges, inlays, onlays, partial crowns and veneers

1 x 50ml cartridge, mixing tips

#1171A1 A1
#1171A3 A3

#1171A2 A2
#1171TW TW

#117200 Temporary crown mixing tips (50ea)
#117210 Temporary crown mixing tips (10ea)

*Spident R&D center internal data.

EsTemp Eugenol / NE

Temporary cement for temporary crown and bridge



EsTemp Eugenol / NE is suitable for temporary cementation of temporary crown and bridge. EsTemp Eugenol is zinc oxide eugenol temporary cement and EsTemp NE is zinc oxide non-eugenol temporary cement.

Characteristics

- Easy to mix & loss-zero syringe type
- Possible to use Auto-mixing tip
- Low film thickness values
- Enough flowability
- Easy removal

Indications

- Temporary cementation of temporary crown, bridge inlay and onlay
- Temporary cementation of provisional and permanent restoration

EsTemp Eugenol

#111100 2 x 10g syringe, eco tips

EsTemp NE

#111200 2 x 10g syringe, eco tips

EsTemp Implant

Non eugenol temporary resin cement for implant retained crown



EsTemp Implant is non-eugenol, dual-cured temporary resin cement for luting implant-retained crowns. It has excellent strength and durability, which allow long-term cementation. It has mechanical retention only – not chemical- with ideal elasticity so that it is easy to remove temporary restorations. The dual cure formula makes it quicker to remove excess material after light cure (5-10 secs).

Characteristics

- Dual cure (Light cure & Self cure)
- Radiopaque
- Easy to use (syringe type)
- Secure retention & retrievable
- Excellent strength and durability
- Dual-cure formula makes it quicker to remove excess materials after light-cured

Indications

- Temporary resin cement for implant-retained crowns

#112100 1 x 8g syringe, mixing tips, eco tip

*Spident R&D center internal data.

EsCem

Dual-cured self-adhesive resin cement



EsCem is dual-cured self-adhesive resin cement. It contains MDP, an adhesive monomer, to improve chemical interaction and durability with the hard tissue. EsCem shows strong adhesion to tissues as well as various indirect restorations, such as zirconia, all-ceramic, composite, and metal. It does not require pre-treatment. It is easy to handle and has radiopacity.

Characteristics

- Powerful adhesive strength to all indirect restoration without pre-treatment
- Reduced chair time by no need of etching, priming or bonding
- Easy-to-use automix type
- Available shades: A2(Universal), TW
- Easy to remove excess material with 1 second of tack curing/ Radiopacity

Indications

- Final cementing of all-ceramic, composite, or metal inlays, onlays, crowns, and bridges
- Final cementing of posts and screws
- Final cementation of all-ceramic, composite, or metal restorations on implant abutment

Clinical Cases



※ Prof. Chan Park (Chonnam University Dental Hospital)

1 x 8g syringe, mixing tips

#3171A2 A2

#3171TW TW

*Spident R&D center internal data.

EsBond

Light-cured 5th bonding agent



EsBond is 5th generation bonding agent that provides high bonding strength in a convenient single bottle application. It is designed to bond all classes of direct composite restorations to dentin, enamel, as well as composite, porcelain and amalgam.

Characteristics

- 5th Generation bonding agent
- Direct light-cured adhesive system
- High bonding strength
- Wet bonding system

Indications

- All direct composite restorations
- Composite indirect restorative cementation
- Composite repairs
- Composite core build-ups
(for use with EsBond Activator)

#313100 1 x 5ml bottle

Es Bond Kit

#313200 1 EsBond, accessories

FineEtch

Etching gel



FineEtch contains 37% phosphoric acid and supplies semi-gel consistency for ideal applications. It effectively removes smear layers and enhances bonding between tooth and restorative material.

Characteristics

- 37% phosphoric acid and semi-gel consistency for ideal applications
- Effective removal of smear layers, enhancing the bonding between tooth and restorative material
- Bio-compatible polymeric materials contained
- Complete residue-free after water-spray
- Excellent viscosity
- Also available as 10%, 35%, and 38%

Indications

- Etching dentin and enamel

Effectiveness

	Before	After
Enamel		
Dentin		

#314100 3 x 5ml syringe, dispensing tips

#314300 4 x 1.2ml syringe, dispensing tips

*Spident R&D center internal data.

Guttapercha Points

Guttapercha Points



Characteristics

- Hand-rolled to the highest standards
- Inspected four times to guarantee flawless consistency in size, taper and uniformity
- Cadmium-free, radiopaque
- Gamma irradiation sterilized

ISO Type 120 x .02 points or 60 x .02 points #420215GP 15 #420220GP 20 #420225GP 25 #420230GP 30 #420235GP 35 #420240GP 40 #420245GP 45 #420250GP 50 #420255GP 55 #420260GP 60 #420270GP 70 #420280GP 80 #420290GP 90 #4202100GP 100 #4202110GP 110 #4202120GP 120 #4202130GP 130 #4202140GP 140	#42021540GP Assorted 15~40 #42024580GP Assorted 45~80 #4202901 40GP Assorted 90~140 Conventional (Regular) Type 100 x feathered type points #4221XFGP X-Fine #4221FFGP F-Fine #4221MFGP M-Fine #4221FIGP Fine #4221FMGP F-Medium #4221MDGP Medium #4221MLGP M-Large #4221LGGP Large #4221ASGP Assorted (MF / F / FM / M) Japanese Type 120 X feathered type points #4241SLGP Small #4241FSGP F-Small	#4241MDGP Medium #4241 FMGP F-Medium #4241LGGP Large #4241FLGP F-Large #4221ASGP Assorted .04 Tapered Type 60 x .04 points #420415GP 15/.04 #420420GP 20/.04 #420425GP 25/.04 #420430GP 30/.04 #420435GP 35/.04 #420440GP 40/.04 #420445GP 45/.04 #42041540GP Assorted 15-40/.04 .06 Tapered Type 60 x .06 points #420615GP 15/.06 #420620GP 20/.06	#420625GP 25/.06 #420630GP 30/.06 #420635GP 35/.06 #420640GP 40/.06 #420645GP 45/.06 #42061540GP Assorted 15-40/.06 Detray Type 100 x feathered type points #4251DOGP XX-Fine #4252DXFGP X-Fine #4253DFGP Fine #4254DMGP Medium #4255DXSGP Assorted Endo-aide #4232GP 240xGP points in dispenser (#15-80 assorted)
-----------------------------------------------------------------------------------------------------------------------------------------------------------------------------------------------------------------------------------------------------------------------------------------------------------------------------------------------------------------------------------	--------------------------------------------------------------------------------------------------------------------------------------------------------------------------------------------------------------------------------------------------------------------------------------------------------------------------------------------------------------------------------------------------------------------------------------------------------------------------------------------------	-----------------------------------------------------------------------------------------------------------------------------------------------------------------------------------------------------------------------------------------------------------------------------------------------------------------------------------------------------------------------------------------------------------------------------------------------	----------------------------------------------------------------------------------------------------------------------------------------------------------------------------------------------------------------------------------------------------------------------------------------------------------------------------------------------------------------------------------------------

Paper Point

Absorbent Paperpoints



Characteristics

- Used in root canal therapy
- Removes moisture from root canal, introduces medicaments
- Hand rolled to ensure better absorbency
- ISO/ADA sized
- Gamma irradiation sterilized

ISO Type 200 x .02 points or 100 x .02 points #410215PP 15 #410220PP 20 #410225PP 25 #410230PP 30 #410235PP 35 #410240PP 40 #410245PP 45 #410250PP 50 #410255PP 55 #410260PP 60 #410270PP 70 #410280PP 80 #410290PP 90 #4102100PP 100	#4102110PP 110 #4102120PP 120 #4102130PP 130 #4102140PP 140 #41021540PP Assorted 15-40 #41024580PP Assorted 45-80 #410290410PP Assorted 90-140	Accessory (Cell pack) Type 40 cells of 5 points #4121XXFPP XX-Fine #4121XFGP X-Fine #4121FIGP Fine #4121MDPP Medium #4121COPP Coarse #4121XCPP X-Coarse	#410445PP 45/.04 #41041540PP Assorted 15-40/.04
	Conventional (Darby) Type 200 points #4121XXFPP XX-Fine #4121XFPP X-Fine #4121MDPP Medium #4121COPP Coarse #4121XCPP X-Coarse #4121ASPP Assorted (XF / F / M / C)	.04 Tapered Type 100 x .04 points #410415PP 15/.04 #410420PP 20/.04 #410425PP 25/.04 #410430PP 30/.04 #410435PP 35/.04 #410440PP 40/.04	.06 Tapered Type 100 x .06 points #410615PP 15/.06 #410620PP 20/.06 #410625PP 25/.06 #410630PP 30/.06 #410635PP 35/.06 #410640PP 40/.06 #410645PP 45/.06 #41061540PP Assorted 15-40/.06
			Endo-aide #4232PP 400xPP points in dispenser (#15-80 assorted)

*Spident R&D center internal data.

VioPex

Premixed Calcium Hydroxide paste with Iodoform



VioPex is temporary root canal filling material with excellent radiopacity. It is antibacterial, premixed paste composed of Calcium Hydroxide with Iodoform.

Characteristics

- Easy to clean and remove
- Good water solubility
- Excellent antibacterial effect
- Superior radiopacity
- High flowability
- Excellent biocompatibility
- Easy to handle (for syringe paste type)

Indications

- Apexification
- Formation of hard tissue barrier
- Checking the irregular shape of root canal
- Root canal filling for exudation control
- Pulp capping
- Root resorption

#441110 1 x 2.2g syringe, dispensing tips, endo stop

VioPaste

Premixed Calcium Hydroxide paste with Barium Sulfate



VioPaste is water-soluble temporary root canal filling material composed of Calcium Hydroxide with Barium Sulfate. This antibacterial premixed paste offers excellent radiopacity. It is easy to clean and remove.

Characteristics

- Easy to clean and remove with good water solubility
- Excellent antibacterial effect
- Superior radiopacity
- Strong bactericidal effect with high pH
- High flowability
- Excellent biocompatibility
- Easy to handle (for syringe paste type)

Indications

- Apexification
- Formation of hard tissue barrier
- Check the irregular shape of root canal
- Root canal filling for exudation control
- Pulp capping
- Root resorption

#441120 1 x 2g syringe, dispensing tips, endo stop

*Spident R&D center internal data.

VioSeal

Resin based sealer / Root canal sealing material



VioSeal is epoxy resin based root canal sealer which is a paste-paste type in dual syringe. It has outstanding chemical and physical properties, including extremely excellent sealing property and biocompatibility.

Characteristics

- Excellent biocompatibility
- Superior radiopacity
- Tight sealing
- Easy to mix paste-paste
- Insoluble in tissue fluids
- Antimicrobial agent
- Radiopaque

Indications

- Permanent obturation of root canals in combination with obturation points
- Lubricant & sealing of GP point
- Adhesion agent between GP and root canal wall

#441100 2 x 6g syringe, dispensing tips

#441200 4 x 1.5g syringe, dispensing tips

SoftPrep

Root canal preparation EDTA cream



SoftPrep is 17% EDTA for lubricant and chelating in root canal. It makes smooth binding and prevents the files from being broken. Water soluble base leaves no residue and easily removes calcifications.

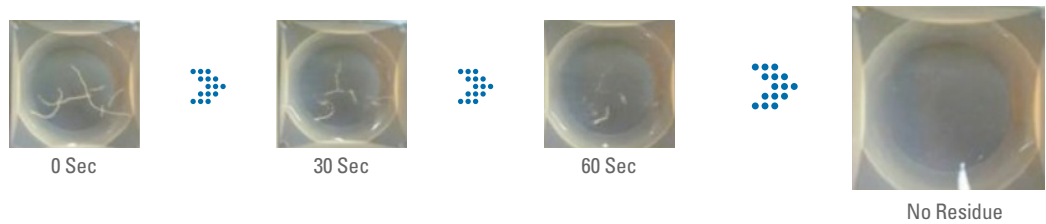
Characteristics

- 17% EDTA in a water soluble base makes no residue and easily removes calcifications

Indications

- Lubricating to minimize the binding and breaking of files
- Chelating and removing calcification

Water solubility



#441130 1 x 10g syringe, mixing tips, eco tip

*Spident R&D center internal data.

Seal.it

Light-cured pit & fissure sealant



Seal.it is light-cured dental material designed for sealing pit and fissure of teeth. It has excellent characteristics of bonding strength, low polymerization shrinkage and abrasion resistance.

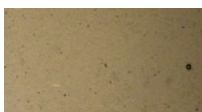
Characteristics

- Low polymerization shrinkage
- Low abrasion resistance
- Suitable viscosity with nano-hybrid filler

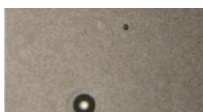
Indications

- Pit & fissure sealant

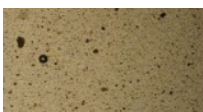
Micro bubbles (300x magnification)



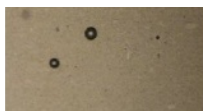
Seal.it
(Spident)



Company A



Company B



Company C



Company D

#1311100 2 x 1.2ml syringe, dispensing tips

Base.it

Light-cured base liner



Base.it contains Calcium Hydroxyapatite in Urethane methacrylate oligomer. It makes Base.it reduce pulp irritation and have low polymerization shrinkage. Base.it stimulates secondary dentin formation by releasing Calcium Ion, Hydroxy Ion and Phosphate Ion.

Characteristics

- Pulp irritation reduction
- Low polymerization shrinkage
- Radiopaque
- Release calcium, phosphate ion
- Secondary dentin formation

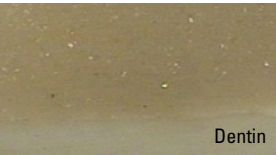
Indications

- Base & cavity liner (For thin residual dentin)

Sealing ability

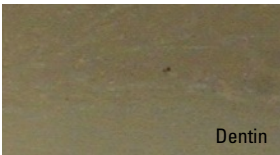
- Adhesive Interface

Optical Microscopy Image (x50)



Dentin

Optical Microscopy Image (x500)



Dentin

- #115200 4 x 2g syringe, dispensing tips
- #115300 2 x 2g syringe, dispensing tips

*Spident R&D center internal data.

FineDam

Resin barrier for isolating tissue



FineDam is light-cured resin barrier for isolating tissue adjacent to teeth being bleached.

Characteristics

- Easy handling
- Easy to remove in one piece
- High elasticity

Indications

- Resin barrier for isolating tissue adjacent to teeth being whitened

#315100 4 x 1.2ml syringe, dispensing tips

Block-out Resin

Bleaching reservoirs on plaster model



Block-out Resin is light-cured methacrylate-based utility resin. It is designed for laboratory use such as for bleaching reservoirs on plaster model.

Characteristics

- Low viscosity
- Blue color
- Provides reservoir space for bleaching tray

Indications

- For bleaching reservoirs on plaster model
- Use for other laboratory procedures

#316100 4 x 1.2ml syringe, dispensing tips

*Spident R&D center internal data.

IMPRESSION

I-SIL PREMIUM REGULAR SET

LIGHT BODY
REGULAR BODY
HEAVY BODY
PUTTY

I-SIL PREMIUM FAST SET

LIGHT BODY
HEAVY BODY
PUTTY

I-SIL BITE

I-SIL PREMIUM JUMBO

REGULAR BODY
HEAVY BODY
HEAVY BODY FAST SET





I-SIL Premium

Vinyl Polysiloxane Impression (A-Silicone)
Regular Set / Fast Set



Advantages

- 1:1 mixing ratio
- Thixotropic
- Snap set effect
- Superior hydrophilicity
 - for excellent flow and the precise detail production
- High dimensional stability
- Excellent recovery after deformation
- High tear strength to maintain impression integrity upon removal

Indications

- Crown, Bridge, Implant impression
- Inlay and onlay impression
- 1 step and 2 step impression techniques

Technical Data

	I-SIL Light Body	I-SIL Regular Body	I-SIL Heavy Body	I-SIL Light Body Fast	I-SIL Heavy Body Fast
Color	Pink, Yellow	Blue	Blue	Yellow	Purple
Working Time (min)	1:30	1:30	1:30	0:40	0:40
Setting Time (min)	4:00	4:00	4:00	2:00	2:00
Shore A hardness	approx.58	approx.60	approx.70	approx.58	approx.70
Strain in Compression (%)	≈ 3	≈ 2	≈ 3.5	≈ 3	≈ 3.5
Elastic Recovery (%)	>99.6	>99.6	>99.6	>99.6	>99.6
Linear Dimensionak Change (%)	< 0.16	< 0.13	< 0.2	< 0.16	< 0.2
Flavor	None	None	None	None	None

I-SIL Premium Regular set

2 x 50ml cartridge, mixing tips

#7111RG Light Body (pink)

#7112RG Regular Body (light blue)

#7113RG Heavy Body (blue)

I-SIL Premium Fast set

2 x 50ml cartridge, mixing tips

#7211FS Light Body Fast (yellow)

#7213FS Heavy Body Fast (purple)

I-SiL Premium Putty

Vinyl Polysiloxane Impression (A-Silicone)
Regular Set / Fast Set



Advantages

- Excellent recovery after deformation
- High dimensional stability
- Snap set effect
- Remarkable tear strength
- Superior hydrophilicity
- for excellent flow and the precise detail production

Indications

- Crown, Bridge, Implant impression
- Inlay and onlay impression

Technical Data

	I-SiL Premium Putty	I-SiL Premium Putty Fast
Color	Purple	Blue
Working Time (min)	1:30	0:40
Setting Time (min)	4:00	2:00
Shore A hardness	approx.70	approx.70
Strain in Compression (%)	≈ 2	≈ 2
Elastic Recovery (%)	>99.4	>99.4
Linear Dimensionak Change (%)	< 0.2	< 0.2
Flavor	None	None

2 x 290ml jars #7121RG Regular set (purple) #7112R Fast set (blue)

I-SIL Bite

VPS bite registration material designed to make accurate interocclusal records



Advantages

- Exceptional accuracy
- Shore A Hardness of A85
- Thixotropic
- Easy to mix and dispense
- Easy to position in Occlusal and Buccal

Technical Data

	I-SIL Bite Registration
Color	Light Blue
Working Time (min)	0:30
Setting Time (min)	1:30
Shore A hardness	approx.85
Strain in Compression (%)	Non-Applicable
Elastic Recovery (%)	Non-Applicable
Linear Dimensionak Change (%)	< 0.06
Flavor	None

#7241BR 2 x 50ml cartridge, mixing tips

I-SiL Premium Jumbo

Regular Set / Fast Set



Advantages

- Same great impression material as I-SiL Premium available for Vacu-Mixer
- Improved hydrophilicity at the surface from the start of mixing
- Designed to minimize voids and bubbles
- High tear strength to maintain impression integrity upon removal

Comparison of auto-mixing and manual mixing



manual mixing



automixing by Vacu-Mixer

Technical Data

	I-SiL Jumbo Regular	I-SiL Jumbo Heavy	I-SiL Jumbo Heavy Fast
Color	Blue	Blue	Purple
Working Time (min)	1:30	1:30	0:40
Setting Time (min)	4:00	4:00	2:00
Shore A hardness	approx.60	approx.70	approx.70
Strain in Compression (%)	≈ 2	≈ 3.5	≈ 3.5
Elastic Recovery (%)	>99.6	>99.6	>99.6
Linear Dimensionak Change (%)	< 0.13	< 0.2	< 0.2
Flavor	None	None	None

10 x 120ml cartridge #7161HB Heavy Body (blue) #7161FS Heavy Body fast set (purple) #7161RG Regular Body (light blue)

ANESTHETICS & OTHERS

ANESTHETICS

NOP Needle

EQUIPMENTS

Focus Plus
Vacu-Mixer
CR scanner

DISPOSABLES

Mixing Tips
Yellow
Green
Core
Cement
Vacu-Mixer

Bite Trays



NOP Needle

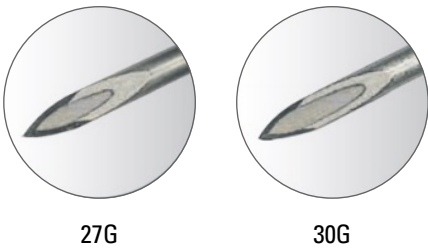


Advantages

- Ultra-sharp, tri-bevel lancet offers smooth entry into tissue, enhancing patient comfort
- Silicone coating significantly reduces pain and tissue damage
- Triangle bevel indicator for needle tip orientation
- EO Sterilized

27G/S (0.4x21mm)	27G/L (0.4x30mm)	27G/L (0.4x38mm)	27G/L (0.4x35mm)	
30G/XS (0.3x12mm)	30G/S (0.3x16mm)	30G/S (0.3x21mm)	30G/L (0.3x25mm)	31G/XS (0.26x12mm)

3D cutting



- #6127SH 27G/Short (04x21mm) (Blue)
- #6127LG 27G/Long (0.4x30mm) (Navy)
- #6127GL 27G/Long (0.4x35mm) (Brown)
- #6127XL 27G/Long (0.4x38mm) (Purple)
- #6130XS 30G/X-short (0.3x12mm) (Yellow)

- #6130SO 30G/Short (0.3x16mm) (Pink)
- #6130SH 30G/Short (03x21mm) (Orange)
- #6130LG 30G/Long (0.3x25mm) (Red)
- #6131XS 31G/X-short (0.26x12mm) (Green)

Focus Plus



Ultra-light(130g), Cordless, Sleek, OLED screen, Handpiece LED curing light that features a digital display and 1-touch functionality.

Consistent output of 1,800mW/cm2 (high-mode) 4modes to choose from including soft-start mode to reduce polymerization shrinkage.

Made in korea.1-year warranty

#511400 Contains : Cordless curing light, charging dock, 3 focusing lens caps, rechargeable battery, adapter and power cord

Vacu-Mixer

Vacu-Mixer is world's first portable impression auto-mixer. With a touch of the button, it brings you flawless auto mixing without voids.

- 1:1 ratio eliminates mixing errors
- 10 seconds for full tray loading
- No voids
- Portable and compact
- Flawless auto mixing reduces chairtime and minimizes retakes



#611100 Vacu-Mixer

SPISCAN PRO



SPISCAN PRO is Phosphor Plate Scanner which delivers great digital X-ray image with 35µm pixel size. By providing different imaging plate sizes (0,1,2,3,4c), it leads users to use on various cases. We provide our own software and yet through TWAIN driver, it can also be linked with other dental diagnostic software.



#530000 SPISCAN PRO

Mixing Tips

Impression Mixing Tips



For use with vinyl polysiloxane impression material cartridges
Homogeneous mixing results with reduced waste. Universal fit.

- #7181YL Yellow mixing tips, pkg of 50
Contains: 25 intraoral tips
Mixing tips have yellow hub
- #7181GR Green mixing tips, pkg of 50
Mixing tips have green hub
- #71811N Intraoral tips, pkg of 25
Yellow tips fits into small (4.2mm) mixing tips

Core Mixing Tips



Brown mixing tips with adjustable intraoral attachment to ensure precision application of core materials. Universally compatible with dual barrel syringe systems. 1: 1 ratio.

- #212100 pkg of 50
Contains: 50 Mixing Tips & 50 Intraoral Tips

Cement Mixing Tips



Brown tapered mixing tips for dual barrel syringe system.
Homogeneous mixing results. 1:1 ratio.

- #112200 pkg of 50
Contains : 50 Cement Mixing Tips

Vacu-Mixer Mixing Tips



For use with Vacu-mixer's impression material, I-Sil jumbo.

- #7191VM Vacu-mixer mixing tip, pkg of 45

Bite Trays

Bitetray



- Disposable impression trays for crown, bridge & bite registration
- Thin occlusal webbing provides superb accuracy

Box of 50 trays (35 trays for Quadrant and Anterior)

#7311GG G-1 sideless #7322GG G-2 half side #7333GG G-3 full side #7344GG G-4 quadrant #7355PGG G-5 anterior

Bitetray Metal Frame

- Metal stamped Bitetrays add rigidity to the frame eliminating distortion



Box of 35 trays

#7322MG MG-2 Metal-stamped half side #7344MG MG-4 Metal-stamped quadrant #7377MG MG-7 Metal-stamped full side

**I feel that there is nothing more truly
artistic than to love people.**

- Vincent van Gogh



Hexa-Temp

Hexa-Temp is bisacrylic self-cured resin, ideal for temporary crown and bridge with ease. It is practical thanks to the compatibility of its cartridge with the 1:1 dispenser and mixing tips of VPS impression materials. Hexa-Temp doesn't need trimming or relining. Hexa-Temp is ideal for long-term temporaries and longer bridge spans as it has exceptional compressive strength and flexural strength with good durability. It is suitable for long term with high fracture resistance. Hexa-Temp shows high gloss, even without polishing, and fluorescence similar to natural teeth.



You're the Artist

